

THE CHANGE OF SOCIO-ECONOMIC DIFFERENCES BETWEEN THE REGIONS OF LITHUANIA, LATVIA AND ESTONIA AFTER THE ACCESSION TO THE EU



**DR. DAIVA VERKULEVIČIŪTĖ –
KRIUKIENĖ**

Klaipėda University (Lithuania)

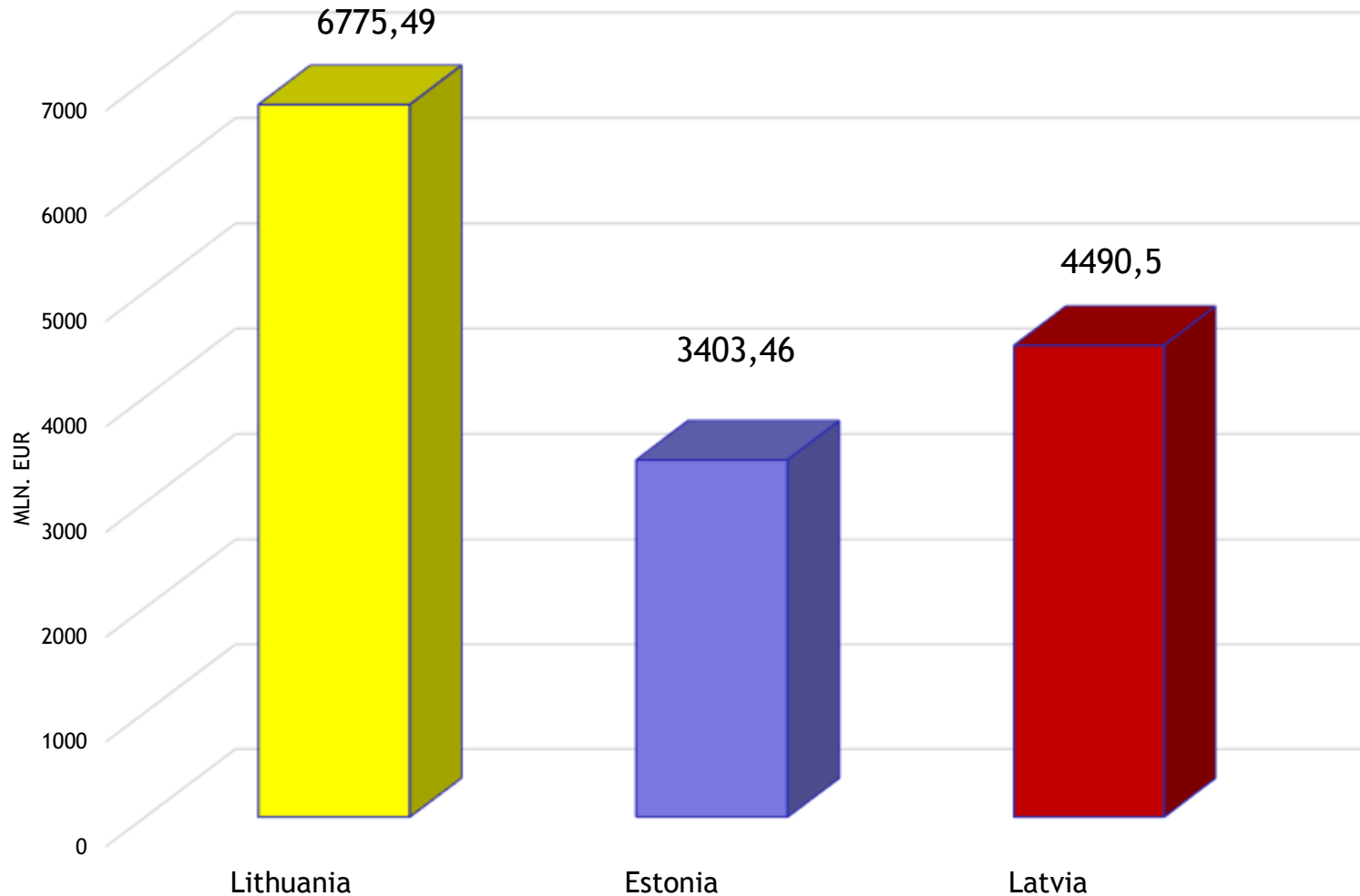
Faculty of Social Sciences

Department of Social Geography

verkuleviciute.daiva@gmail.com

The aim of this study is to analyse the changes of basic socio-economic indicators which determine the conditions of human life between Lithuanian, Latvian and Estonian territorial units (regions), from 2004 to 2012 (2013) year.

EU funds have been allocated for Lithuania, Latvia and Estonia for the period 2007-2013 (mln. EUR)



Source: ES struktūrinė parama 2013

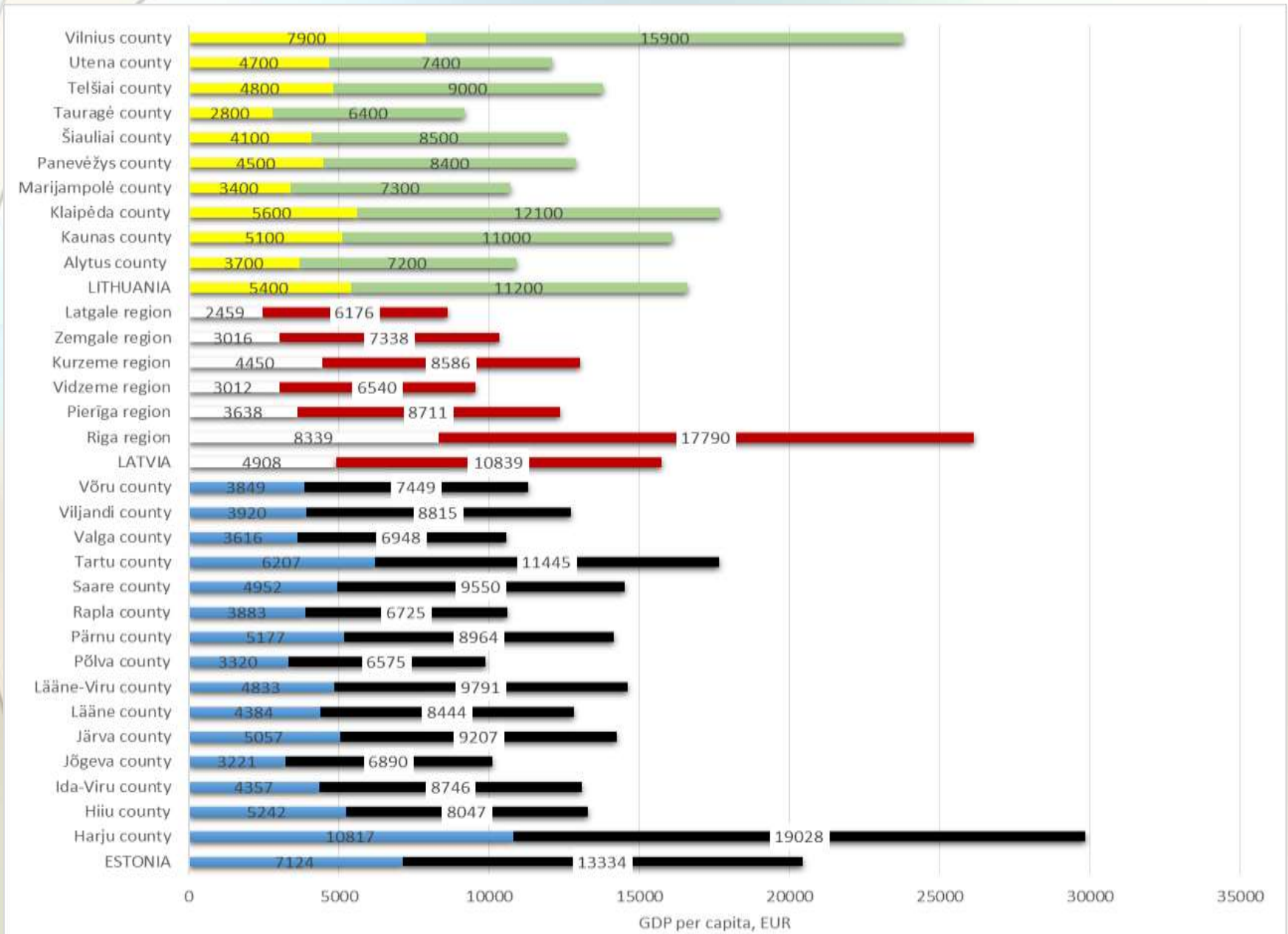
GDP per capita in Latvia and Lithuania in relation to the Estonia average (Estonia = 100) in 1995, 2004, 2008 and 2013, %

Countries	1995	2004	2008	2013
Lithuania	74,5	75,3	83,7	84,9
Latvia	78,0	65,0	86,8	84,0

Sources: Eesti statistics 2014; Latvijas statistika 2014; Lietuvos statistikos departamentas 2014

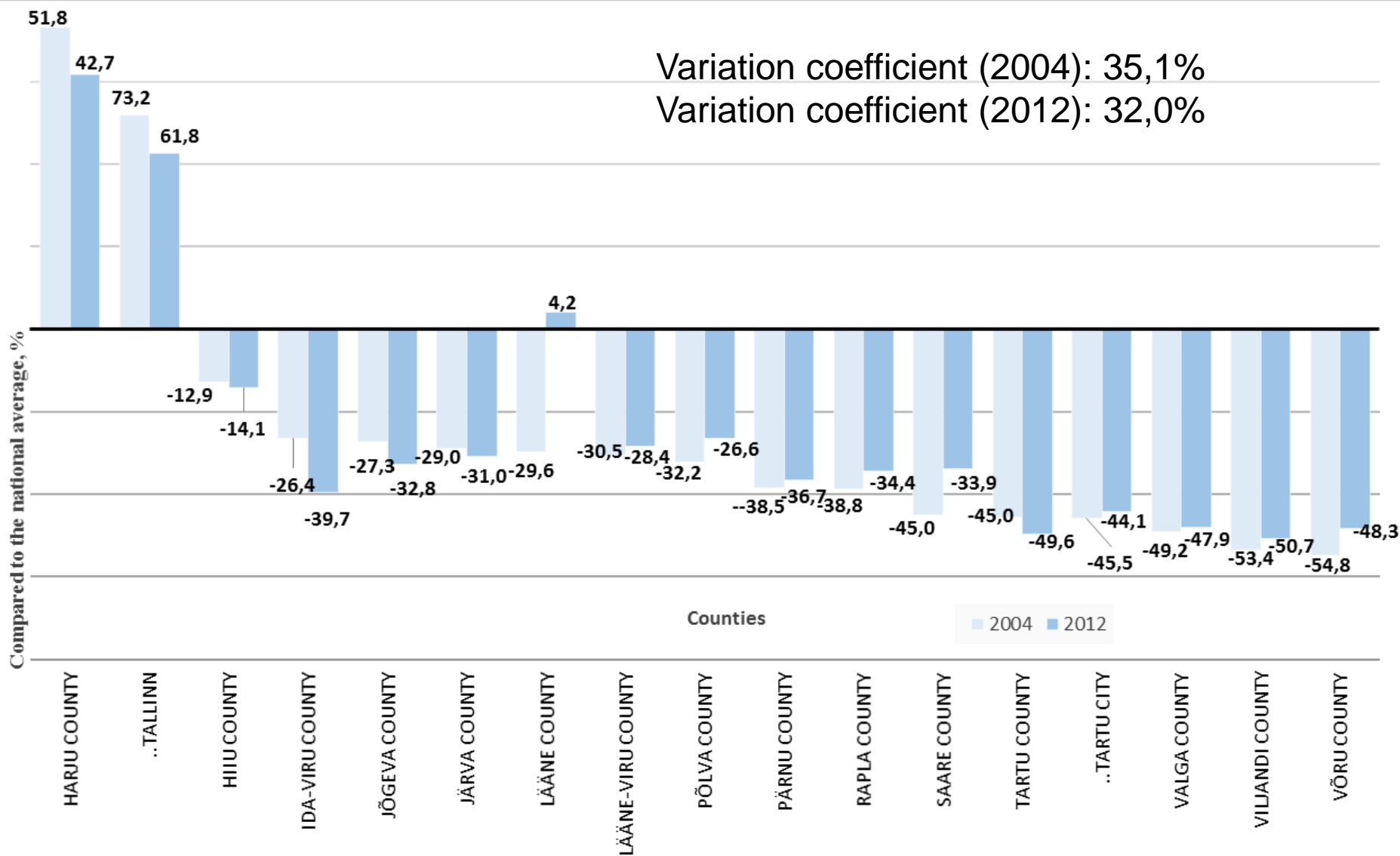
- The beginning of the membership (2004) GDP per capita in Estonia, Latvia and Lithuania were accordingly 55 %, 44 % and 50 % of the EU average. In 2007 economic growth in Latvia, Lithuania and Estonia was very high and these countries was between leaders.
- GDP per capita in the Baltic countries increased by an average 46% in 2004-2013.

GDP per capita in regions (counties) of Lithuania, Latvia and Estonia in 2004 and 2012



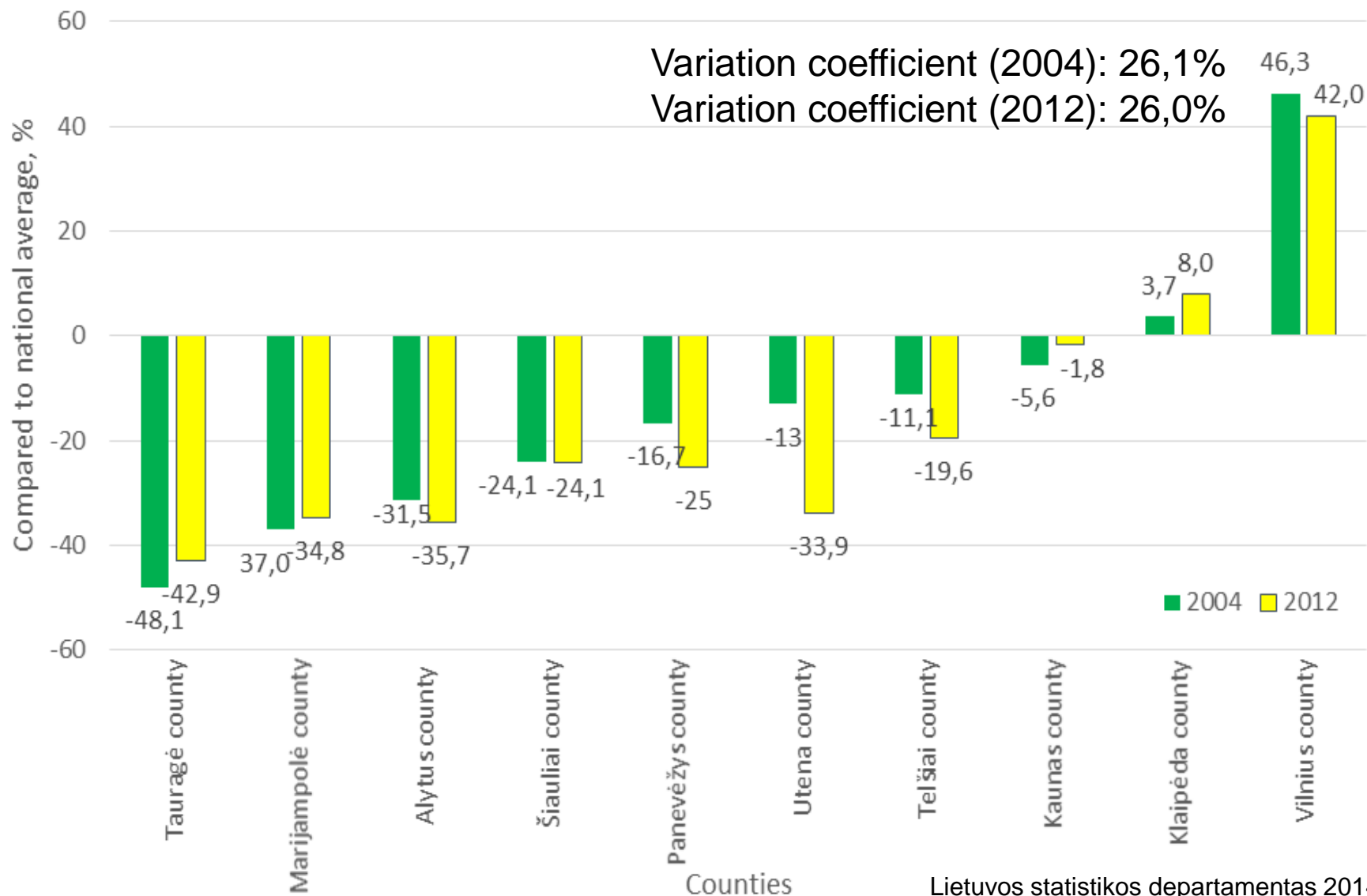
Sources: Eesti statistics 2014; Latvijas statistika 2014; Lietuvos statistikos departamentas 2014

GDP per capita in counties of Estonia compared to national average in 2004 and 2012, %

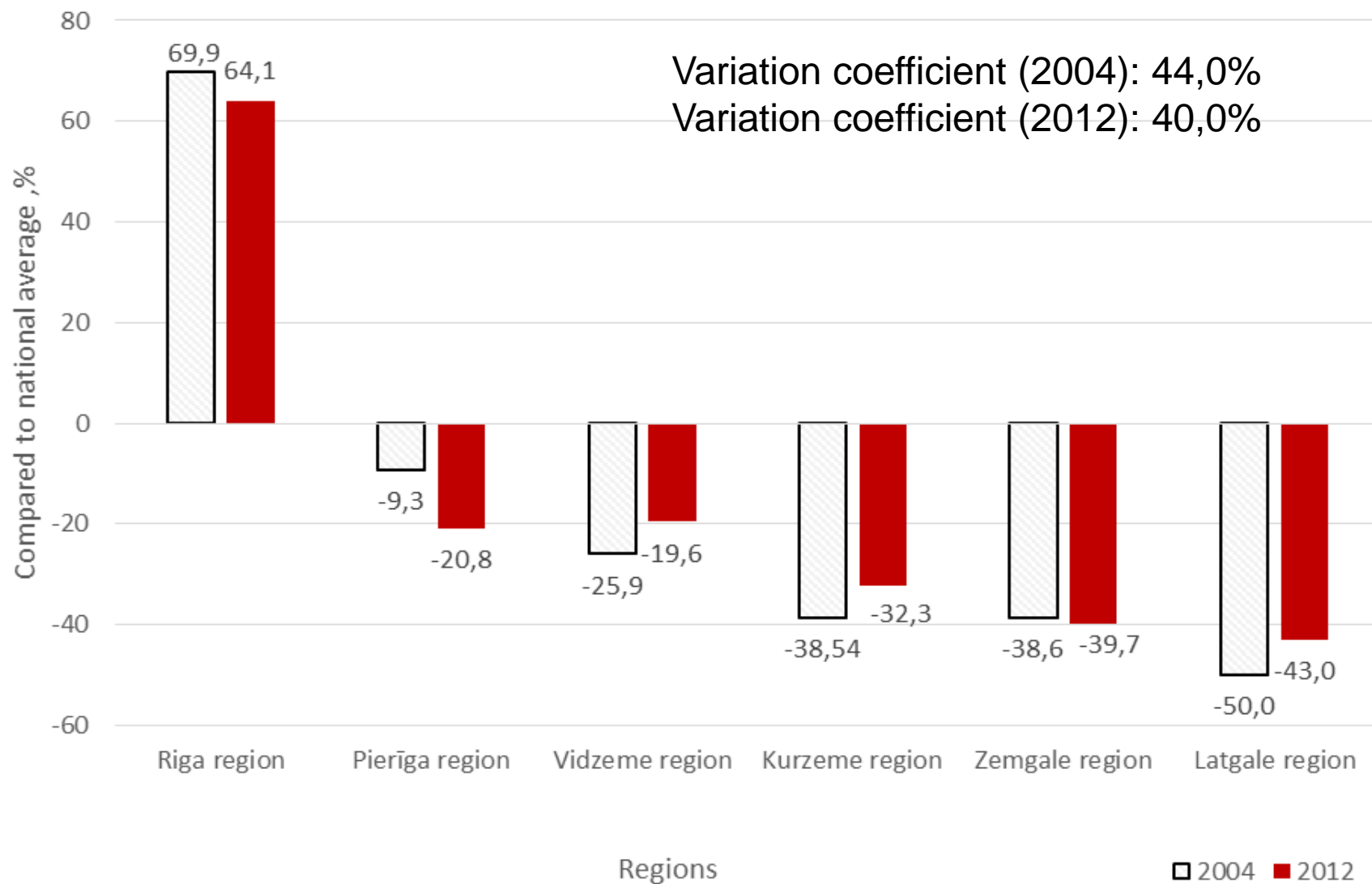


Source: Eesti statistics 2014

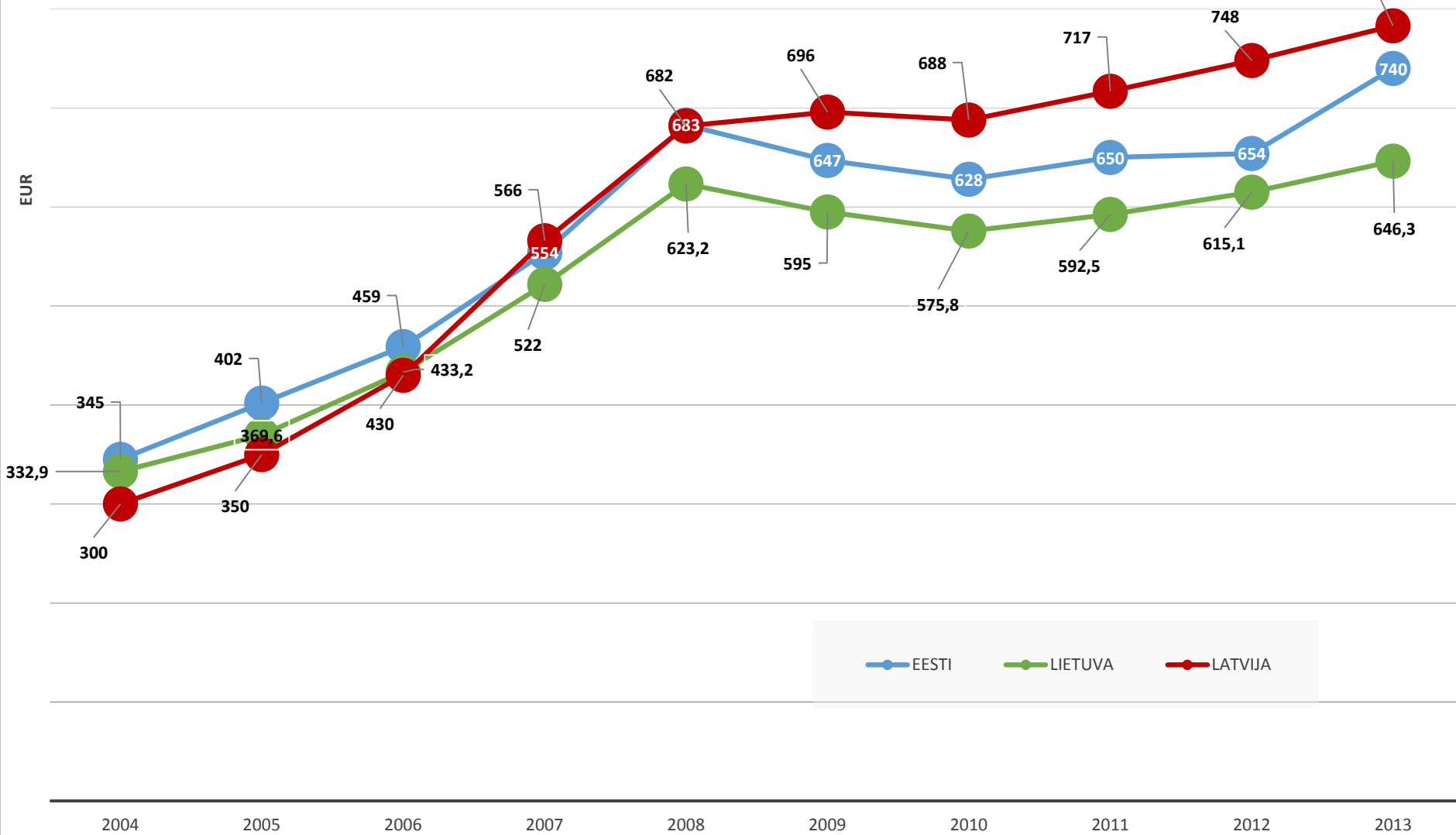
GDP per capita in counties of Lithuania compared to national average in 2004 and 2012, %



GDP per capita in regions of Latvia compared to national average in 2004 and 2012, %



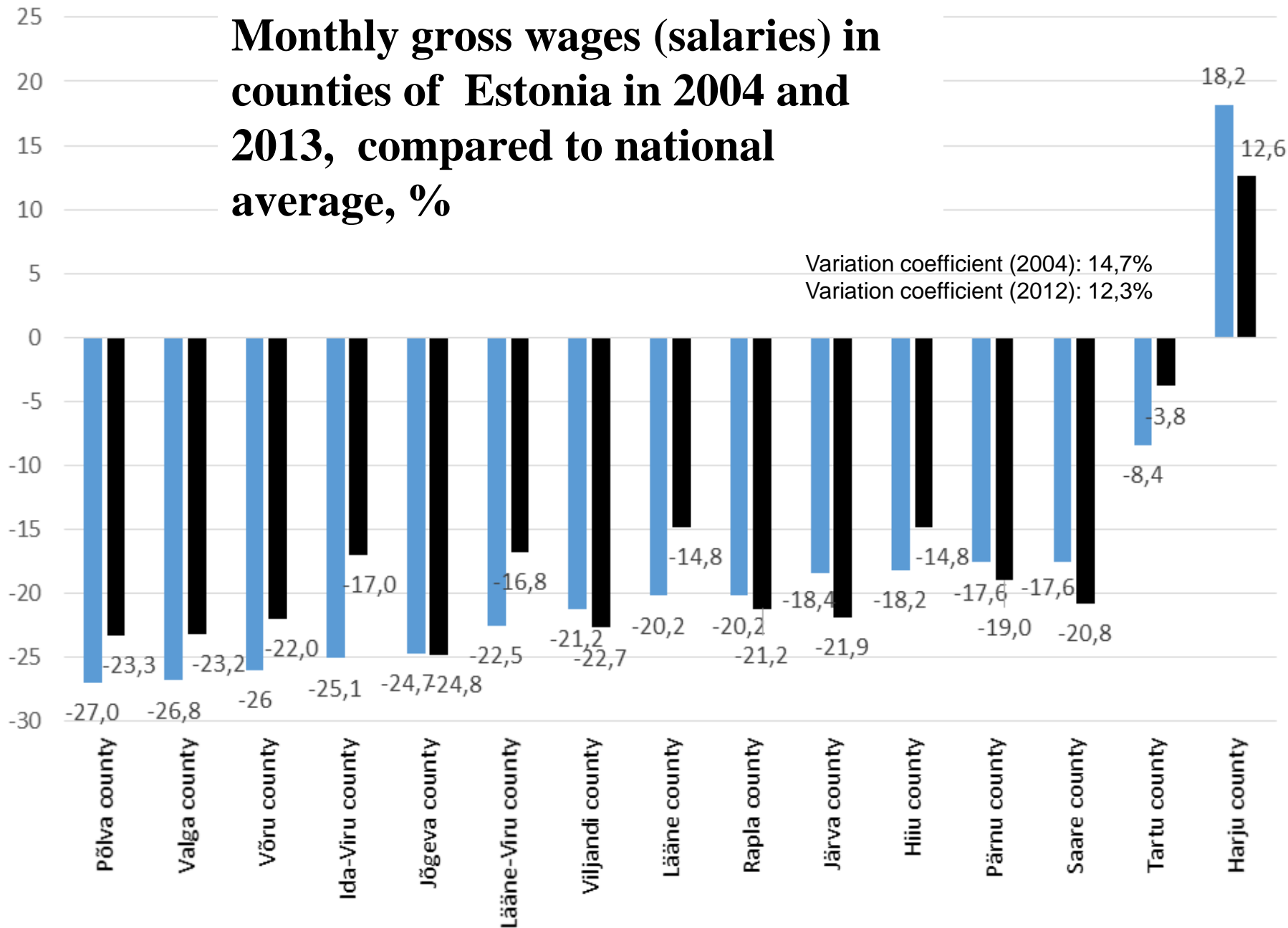
Change of average monthly gross wages (salaries) in Estonia, Latvia and Lithuania in 2004-2013, euros



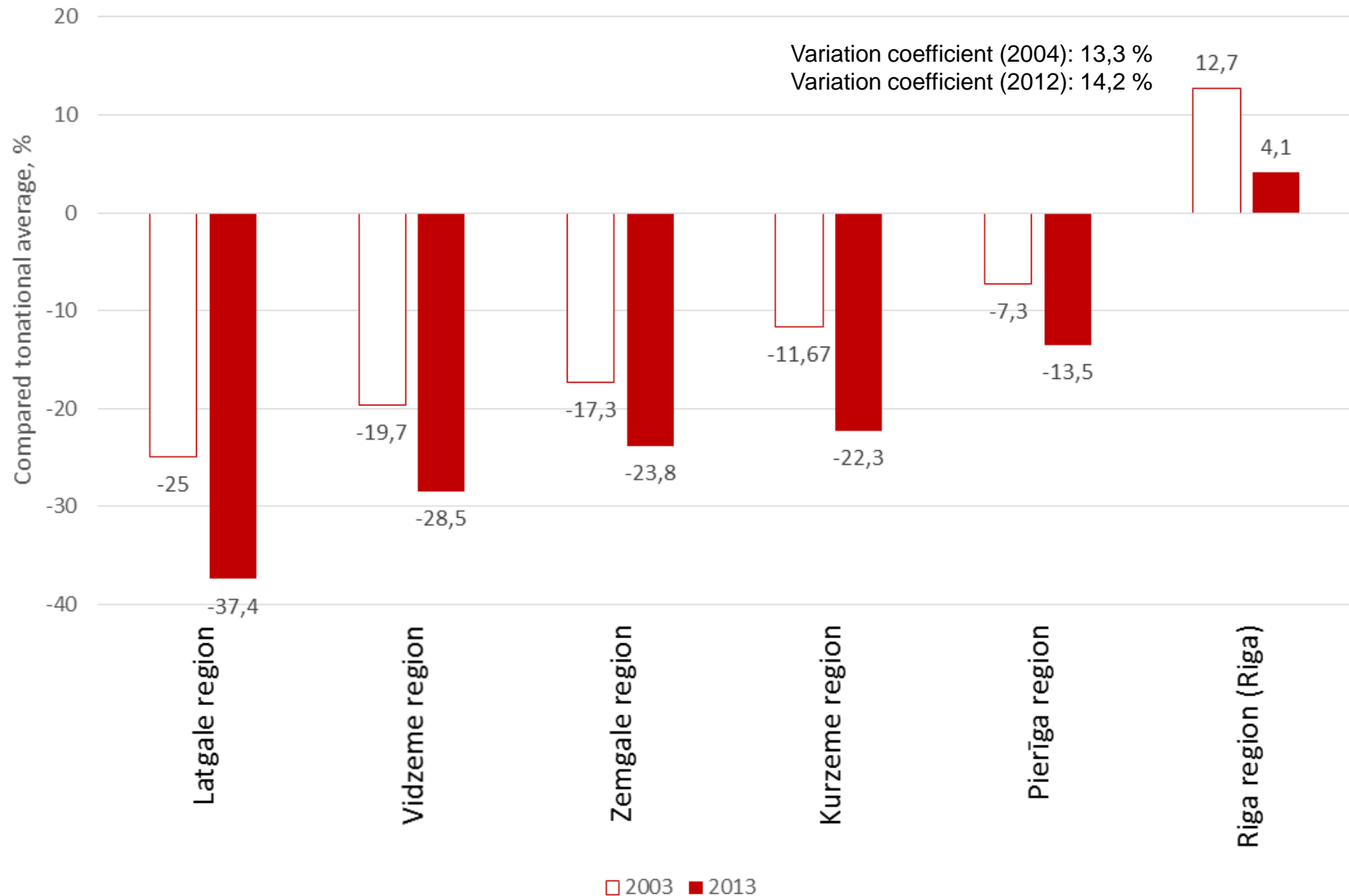
Sources: Eesti statistics 2014; Latvijas statistika 2014; Lietuvos statistikos departamentas 2014

Monthly gross wages (salaries) in counties of Estonia in 2004 and 2013, compared to national average, %

Compared to national average, %



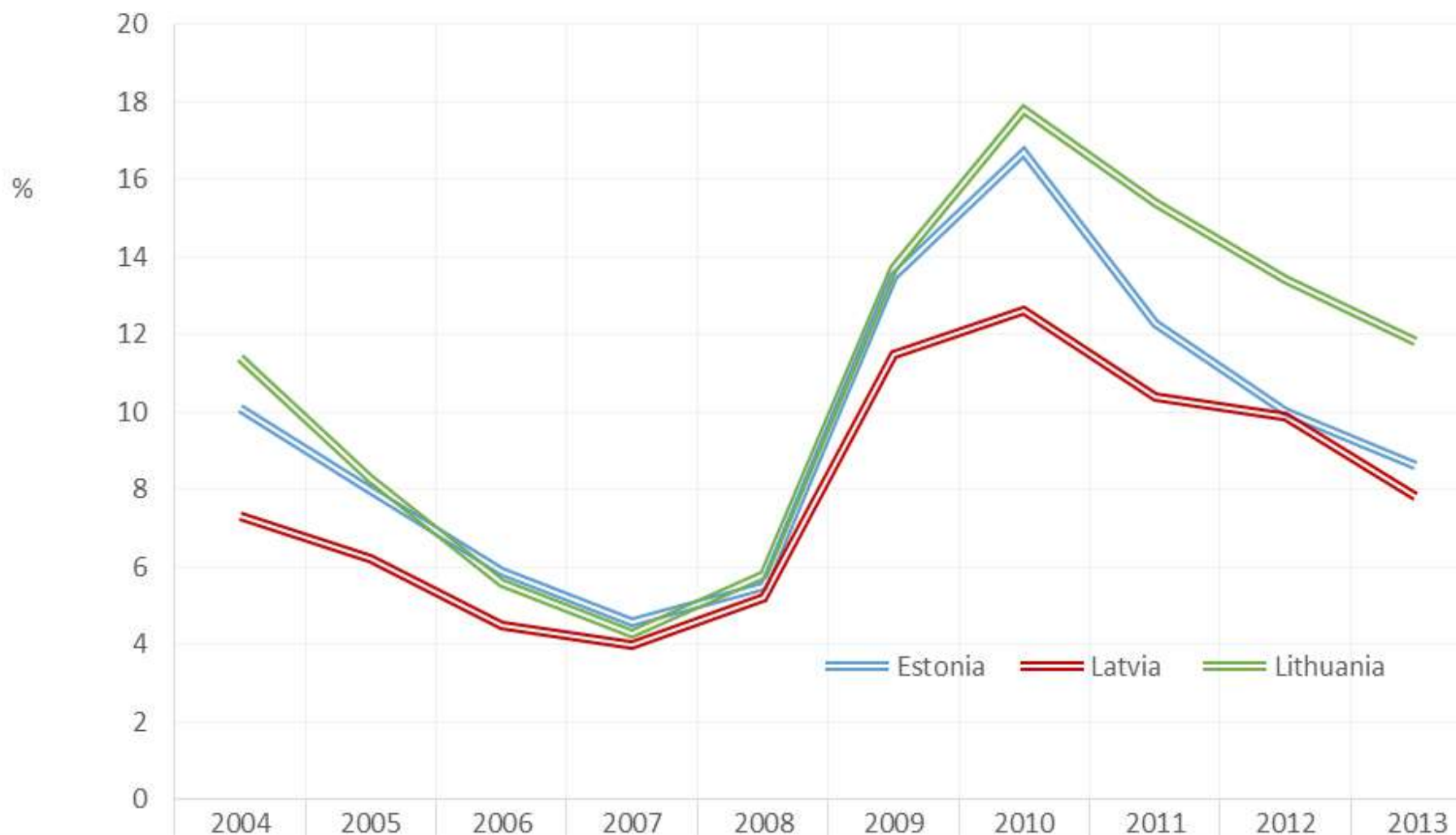
Monthly gross wages (salaries) in regions of Latvia in 2004 and 2013, compared to national average, %



Monthly gross wages (salaries) in counties of Lithuania in 2004 and 2013, compared to national average, %

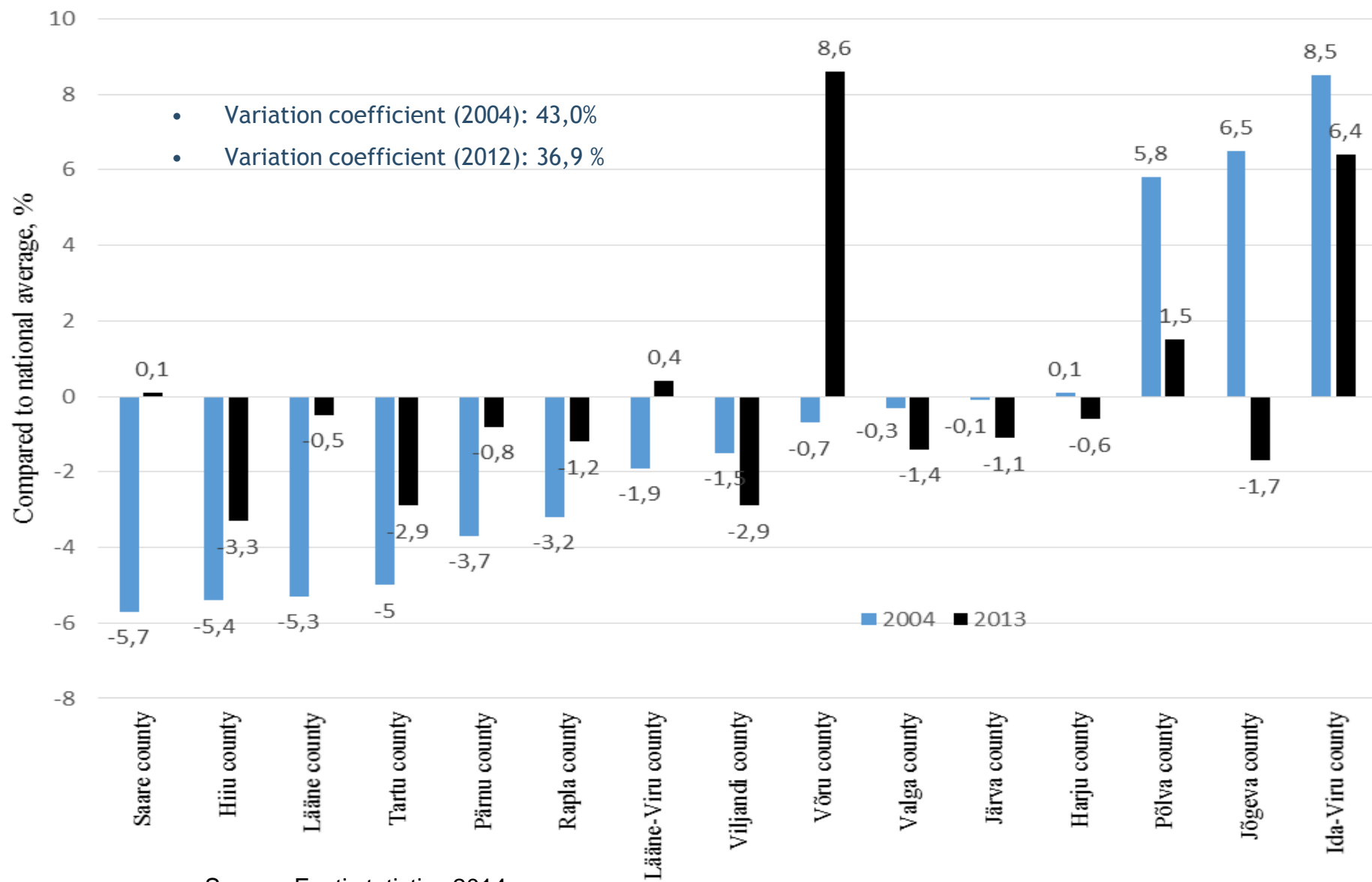


Change of unemployment rate in Estonia, Latvia, Lithuania in 2004-2013, %



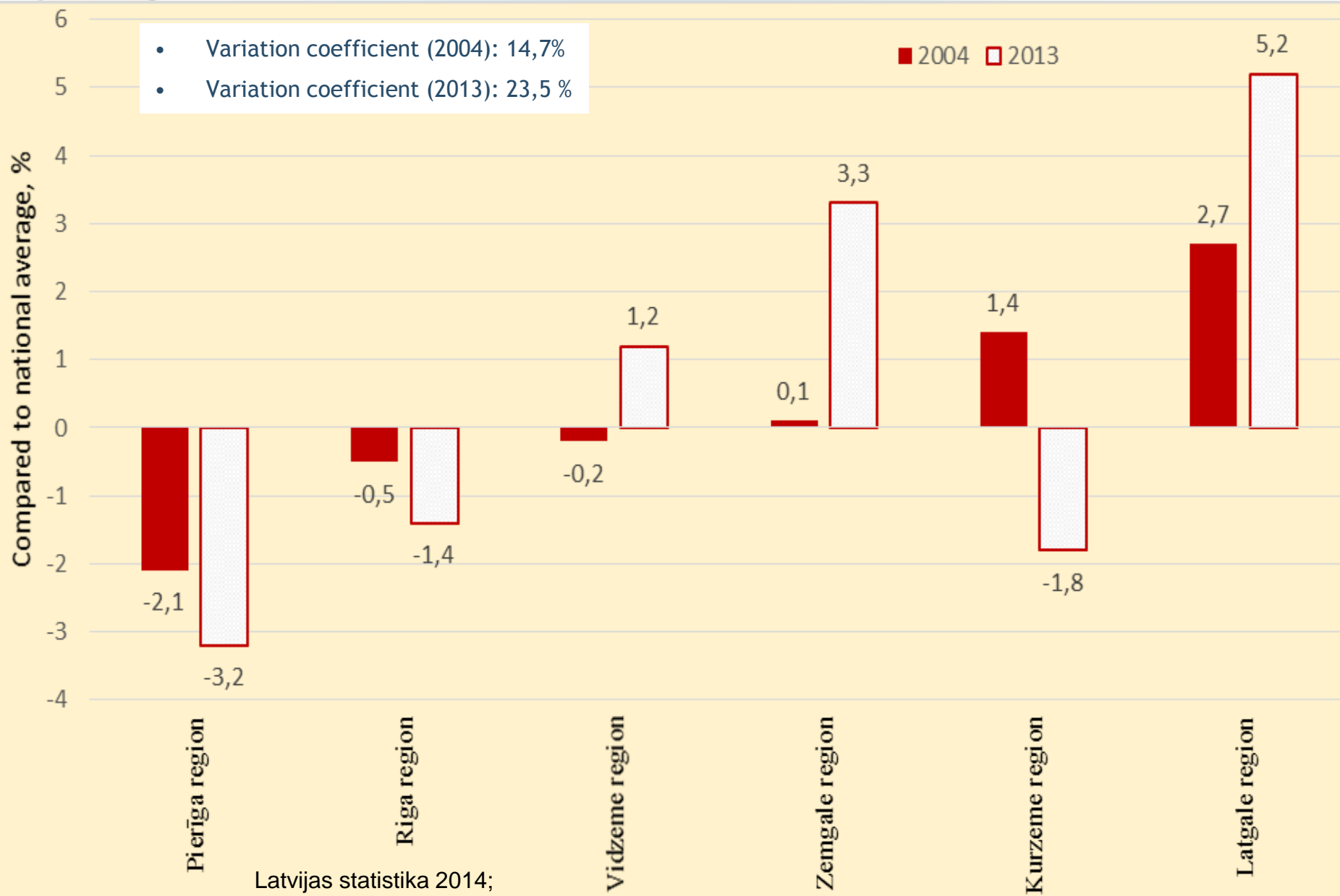
Estonia	10,1	8	5,9	4,6	5,5	13,5	16,7	12,3	10	8,6
Latvia	7,3	6,2	4,5	4	5,2	11,5	12,6	10,4	9,9	7,8
Lithuania	11,4	8,3	5,6	4,3	5,8	13,7	17,8	15,4	13,4	11,8

Unemployment rate in regions of Estonia in 2004 – 2013, compared to national average, %



Source: Eesti statistics 2014

Unemployment rate in regions of Latvia in 2004 – 2013, compared to national average, %



10

Unemployment rate in counties of Lithuania in 2004 – 2013, compared to national average, %

8

6

4

2

0

-2

-4

-6

Compared to national average, %

- Variation coefficient (2004): 33,2 %
- Variation coefficient (2013): 21,8 %

8,0

5,0

4,1

3,6

3,0

2,1

-1,8

-1,8

-2,1

-4,4

0,9

4,6

1,2

1,2

1,3

-1,1

-1,1

-0,3

-2,5

-4,5

Klaipėda county

Vilnius county

Kaunas county

Tauragė county

Telšiai county

Šiauliai county

Marijampolė county

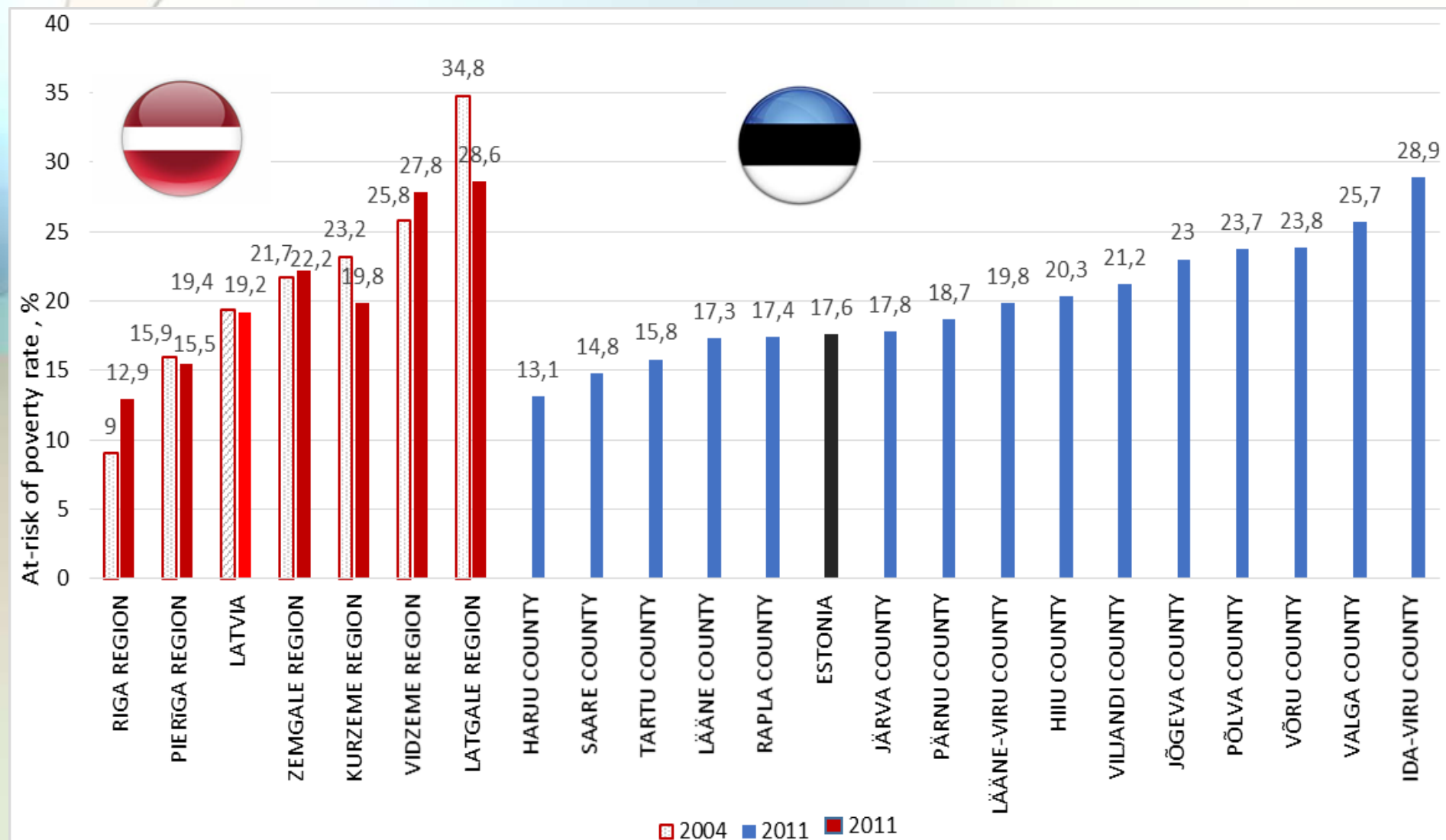
Panevėžys county

Alytus county

Utena county

■ 2004 ■ 2013

AT-RISK OF POVERTY RATE IN REGIONS OF LATVIA AND COUNTIES OF ESTONIA IN 2004 - 2011, %



CONCLUSIONS

- Since the Baltic states accessed to the EU, regional differences are diminishing. However, capital city regions remain leaders in terms of investment, GDP and wages (salaries). Variation in wages (salaries) and the unemployment rate fell in Estonia and Lithuania, but in Latvia - increased.